

# FC 700

## Cost-Effective Fetal Monitor for Single Fetus



- *Clear signal quality*
- *Automatic fetal movement detection*
- *Easy-to-read full size chart paper*
- *Quick & easy operation*

**Medical Device Depot**  
Inc.

[www.medicaldevicedepot.com](http://www.medicaldevicedepot.com)  
1-877-646-3300

# Why FC700?

1. **3 Year Warranty!**
2. **Superior Design & Portability!**
3. **Features!**
4. **Customer Service!**
5. **Complete & Ready To Use Out of the Box!**

## 2. Superior Design & Portability



**Large Character Display**  
Fetal Heart Rate,  
Uterine Contraction,  
Fetal Heart Beat

**One-touch Operation**  
Volume Up/Down  
UC Reference Zeroing  
Alarm On  
Start Recording

**Built-in Full-size thermal printer**  
**Plain thermal fax paper can be used**

# 3. Features

## Functions and quality

- Water-tight & Robust Probes
- Extreme ultrasound sensitivity
- Automatic fetal movement detection
- FHR high/low alarm function

## Special benefits

- Simple to read signal report on full-size format
- Cost-effective

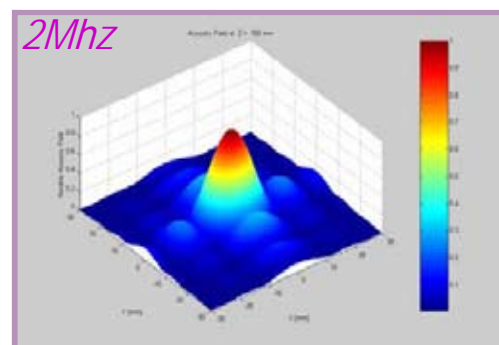
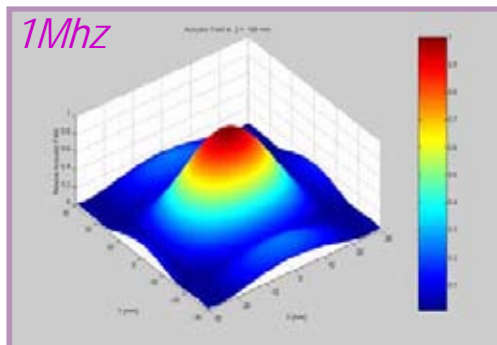
## User friendly interface

- Simple setup mode
- Trouble free operation

# 3. Features

## 3.1. Extreme ultrasound sensitivity - 1Mhz

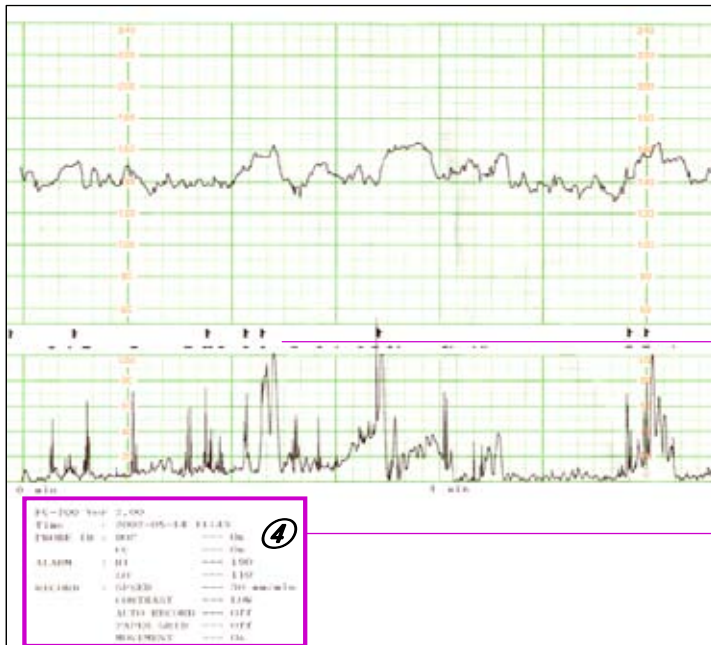
→ Do you know the difference between 1Mhz and 2Mhz?



Benefits of 1Mhz ;	Risk factors of 2 Mhz ;
Accurate FHR detection Continuous FHR traces Reduced noisy or false signal	Inaccurate FHRs Noisy signals Detection of the MHR as the FHR

# 3. Features

## 3.2. Simple to read signal report on full-size paper



- ① FHR signal trend
- ② Fetal movement (Auto, Event Marker)
- ③ UC trend + FM intensity
- ④ Parameters
  - Date, Time
  - Probe (FHR, UC) status
  - Alarm status
  - Printing speed,
  - Contrast, grid
  - Movement on/off

**Easy-to-file with perforated line**

# 3. Features

## 3.3. Control Panel

### FHR volume

- volume adjustment (0~7)
- changes the values in setup mode

### UC zero reference

- Short press; Adjust UC value to 10
- Long press; enter record setup mode



- Setup Mode**
1. Printer speed
  2. Print grid
  3. Print contrast
  4. Auto period
  5. Fetal Movement

### Alarm setup

- Short press-> Alarm on/off
- Long press->alarm/time setup
- Exit the setup mode without saving

### Record

- Short press->start/stop recording
- Long press->faster printout
- Exit the setup mode and save

## 3. Features

### 3.4. Watertight & Robust Probes



- *Passes the drop test from 5 feet on to cement floor*
- *Passes the water protection test under 30cm of water*
- *9-crystal ultrasound probe : Wide and high sensitive*

## 4. Customer Service

- ▶ *High level of customer satisfaction:  
People like our products & service staff*
- ▶ *Complimentary telephone based training  
& ongoing technical support*
- ▶ *No nonsense support and service*
- ▶ *US based technical support –  
no language/accents issues*



## **5. Complete & Ready To Use Out of Box**

- ▶ **1 Ultrasound Probe & 1 TOCO probe**
- ▶ **1 Event Marker**
- ▶ **Ultrasound Gel**
- ▶ **2 belts**
- ▶ **2 rolls of archival thermal paper**
- ▶ **Hospital Grade Power Cord**

**The only thing we don't supply is the patient!**