



## > WOMEN'S HEALTH

### Specula Lighting Systems

> Specula Lighting Systems \_\_\_\_\_ 144

### Vaginal Specula

> KleenSpec Vaginal Specula \_\_\_\_\_ 145

> KleenSpec Vaginal Specula with Attached Sheath \_\_\_\_\_ 145

> KleenSpec Vaginal Specula with Smoke Tube \_\_\_\_\_ 146

> KleenSpec Economy Series \_\_\_\_\_ 146

> KleenSpec Storage Systems \_\_\_\_\_ 146

### Colposcope

> Video Colposcope \_\_\_\_\_ 147

### Image Management

> Image Management \_\_\_\_\_ 148

**Medical Device Depot**  
Inc.

www.medicaldevicedepot.com  
1-877-646-3300

## 144 Specula Lighting Systems

WOMEN'S HEALTH



**59001** KleenSpec  
 590 Series Disposable  
 Vaginal Specula, Medium

**79900** KleenSpec  
 Disposable Vaginal  
 Specula Cordless  
 Illuminator

### Cordless Specula Lighting Systems

Designed with enhanced unique new features.

- > Advanced LED light source provides improved visualization of the exam area by supplying brighter, whiter light
- > No cord to get in the way during procedures
- > Automatically illuminates upon insertion of the illuminator and once it is removed the light goes off
- > Use your Cordless Illumination System as an all purpose light source as well as with the KleenSpec® Disposable Vaginal Speculum

- 79910** Complete KleenSpec® Disposable Vaginal Specula Cordless Illuminator with Charging Station
- 79920** Complete KleenSpec Disposable Vaginal Specula Cordless Illuminator with Charging Station and Auxiliary Power Cord
- 79900** KleenSpec Disposable Vaginal Specula Cordless Illuminator
- 73910** Charging Station for Cordless Illuminator
- 75910** Auxiliary Power Cord Accessory for Cordless Illuminator

### Specula Lighting Systems

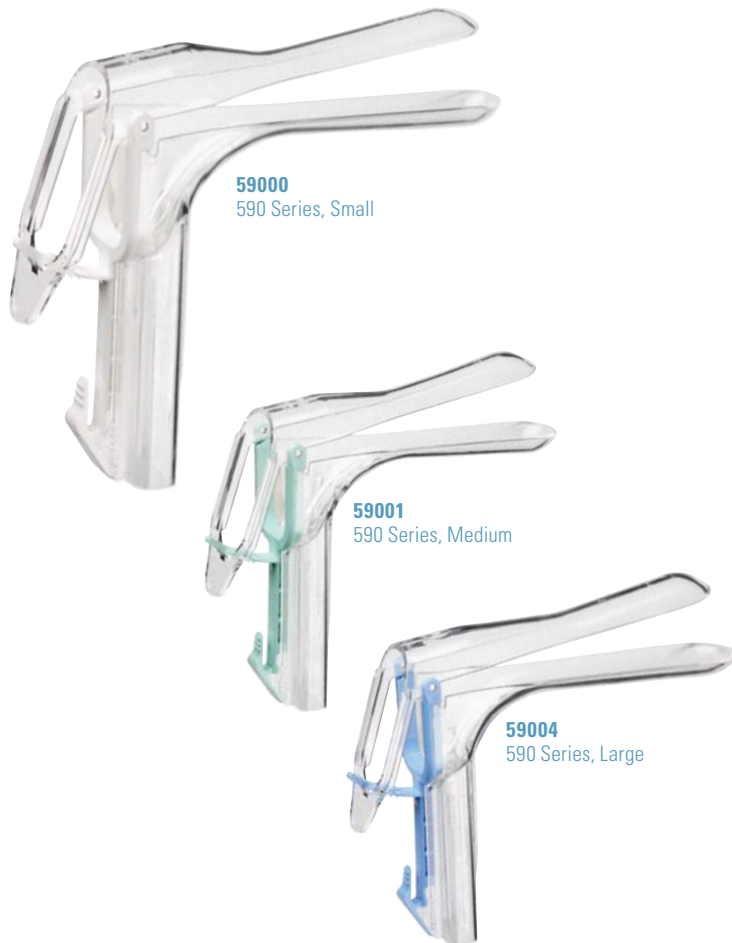
- 78810** KleenSpec Disposable Vaginal Specula Illumination System—Light Handle with Integrated On/Off Switch and Transformer
- 78800** Light Handle with On/Off Switch only
- 73410** Transformer with 5 ft Cord
- 58010** Disposable Sheaths (25/box, 5 boxes/case)
- 08800-U** 4.6 V Halogen Replacement Lamp for 78810 Illumination System



**08800-U**  
 Halogen Lamp

**78800** Light Handle with  
 On/Off Switch Only

**73410** Transformer  
 with 5 ft Cord



## KleenSpec® Vaginal Specula

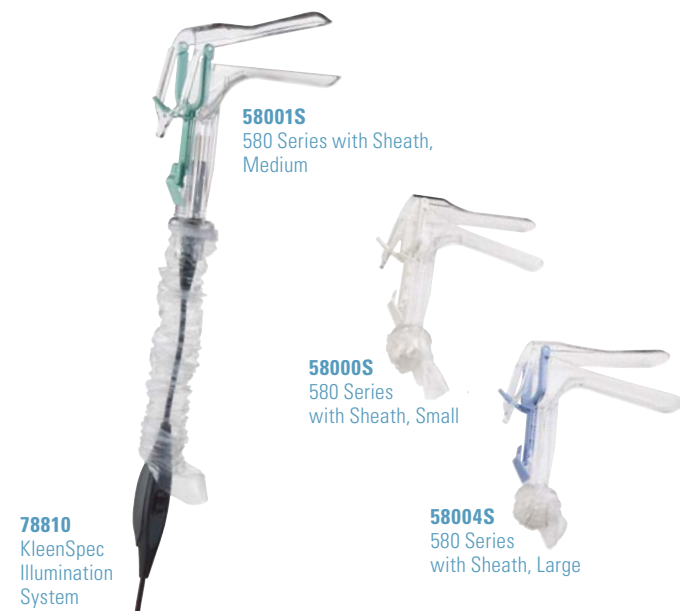
Welch Allyn's single-use specula eliminate the time and expense of reprocessing and reduce the chance of cross-contamination. Each speculum is designed and manufactured to set a new standard in durability and reliability.

- > Newly designed light pipe provides a homogeneous spot and eliminates glare back
- > New wider handle provides improved ergonomics, better balance, and is much easier to manipulate during exams
- > Smooth, molded acrylic will not pinch or bind tissue for greater patient comfort during the exam
- > The new 590 Series KleenSpec® Vaginal Speculum is compatible with the new cordless illumination system (catalog # 79910) as well as the current illumination system (catalog # 78810)

**59000** KleenSpec 590 Series Disposable Vaginal Specula, Small (case of 96)

**59001** KleenSpec 590 Series Disposable Vaginal Specula, Medium (case of 96)

**59004** KleenSpec 590 Series Disposable Vaginal Specula, Large (case of 76)



**78810**  
KleenSpec Illumination System

## KleenSpec® Vaginal Specula with Attached Sheath

Reduces the risk of illuminator contamination.

- > Preattached sheath easily pulls down over the Welch Allyn illumination system
- > The deployed sheath protects the light cord from cross-contamination
- > Unique Welch Allyn high-quality molded acrylic for patient comfort and reliability

**58000S** KleenSpec 580 Series Disposable Vaginal Specula with Sheath, Small (case of 80)

**58001S** KleenSpec 580 Series Disposable Vaginal Specula with Sheath, Medium (case of 80)

**58004S** KleenSpec 580 Series Disposable Vaginal Specula with Sheath, Large (case of 60)

WOMEN'S HEALTH



**59005**  
 KleenSpec  
 590 Series  
 Disposable Vaginal  
 Specula with Smoke  
 Evacuator Tube, Small

## KleenSpec® Vaginal Specula with Smoke Tube

For smoke evacuation during electrosurgical procedures.

- > Built-in smoke evacuation channel that assures a clear view
- > Unique integrated light source
- > Convenient single-use disposable for patient safety
- > Excellent visibility—transparent blades allow full visualization of the exam area
- > Smooth, molded acrylic will not pinch or bind tissue for greater patient comfort during exams
- > Easy one-handed operation provides multiple settings with positive locking positions

**59005** KleenSpec 590 Series Disposable Vaginal Specula with Smoke Evacuator Tube, Small (case of 48)

**59006** KleenSpec 590 Series Disposable Vaginal Specula with Smoke Evacuator Tube, Medium (case of 48)



**58600**  
 KleenSpec  
 586 Series Disposable  
 Vaginal Specula, Small

## KleenSpec® Economy Series

Integrated illumination in an economical package.

- > No sharp edges with this quality economy line
- > Expendable illuminator can be re-sterilized 50 times before disposal
- > No need for bulky, low-quality exam lights

**58600** KleenSpec 586 Series Disposable Vaginal Specula, Small (case of 100)

**58601** KleenSpec 586 Series Disposable Vaginal Specula, Medium (case of 100)

**78600** Expendable Illuminator for Vaginal Specula (6/box, 6 box/case)



**78820**  
 KleenSpec  
 Illumination Storage System

## KleenSpec® Storage Systems

The convenient KleenSpec Illumination Storage System mounts directly in an exam room to organize the illuminator, cords and extra lamps. The Vaginal Specula Storage Dispenser keep multiple specula handy.

**78820** KleenSpec Illumination Storage System

**58014** KleenSpec Vaginal Specula Storage Dispenser



**58014**  
 KleenSpec Vaginal Specula  
 Storage Dispenser



**89000A**  
 Video Colposcope  
 with Swing Arm

**88000A**  
 Video Colposcope with  
 Vertical Stand

## Video Colposcope

Offer more complete care with true video colposcopy combining light, power and video for high-resolution imaging, superior diagnostics and information management.

- > The direct-to-screen colposcope gives you full-screen, high-resolution images with no couplers or beam splitters to degrade image quality or field of view
- > Welch Allyn Solarc® lighting generates 50% whiter, brighter light for true tissue color
- > Push button on-screen magnification index
- > Unique polarization filter removes glare for accurate tissue assessment
- > Electronic green filter removes red from image with no light loss
- > A variety of documentation options are available

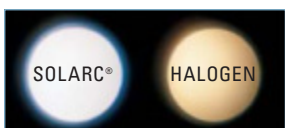
- 88000A** Video Colposcope with Vertical Stand
- 89000A** Video Colposcope with Swing Arm
- 88001A** Video Colposcope with Vertical Stand and Monitor
- 89001A** Video Colposcope with Swing Arm and Monitor
- 88007** Video Colposcope with Vertical Stand, Monitor, Dust Cover and Replacement Lamp

## Video Colposcope Accessories

- 65176** Sony® 14 inch LCD Monitor
- 88010** Cervical Model
- 88040** Dust Cover for Vertical Stand Video Colposcope
- 89040** Dust Cover for Swing Arm Video Colposcope
- 09800-U** Replacement Solarc Lamp Assembly for Video Colposcope

## Printers and Accessories

- 65189** Sony® UP20 Color Video Printer
- 65172** JVC® S-VHS Recorder
- 88500** RS-232 Interface Cable (replacement)
- 88600** S-Video Cable (replacement)
- 65164** FS-20 Foot Switch (one function)
- 65184** UPC 21S Print Pack—  
 3 sets of 80 prints with ink cartridges  
 (for UP20 printer model)

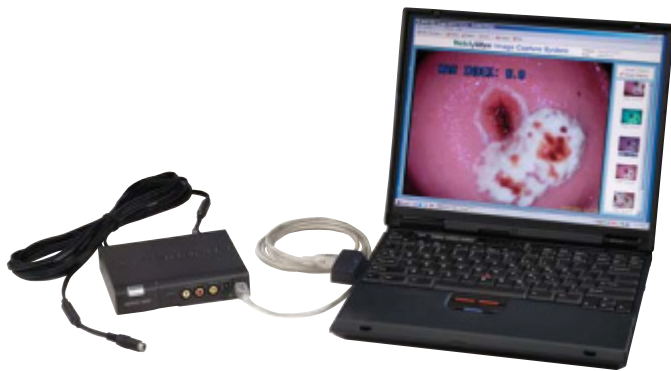


Welch Allyn Solarc lighting generates 50% whiter, brighter light for true tissue color



The direct-to-screen colposcope gives you full-screen, high-resolution images with no couplers or beam splitters to degrade image quality or field of view

WOMEN'S HEALTH



**88802**  
Image Capture System  
for Laptop PC

**MINIMUM SYSTEM REQUIREMENTS:**

- 800 MHz Processor
- 256 MB RAM
- IEEE 1394 Port or PCMCIA/PCI Card Slot
- RS-232 Port (for direct communication with video colposcope)
- 20 GB Hard Drive Space (for image storage)
- Monitor 1024 x 768 resolution—256 color minimum
- Windows 2000® or XP® Operating System
- CD-ROM for software installation

## Image Management

Take full advantage of your Welch Allyn Video Colposcope with this simple and affordable software-based imaging solution. It works directly with the colposcope to provide imaging documentation that can be integrated directly into your existing office technology and workflow.

- > Capture, review, print and export colposcope images quickly and easily
- > View captured images in real time—no more waiting for hard copies to print
- > Electronic image storage facilitates patient tracking and management
- > Communicates directly with the Welch Allyn Video Colposcope
- > Flexible, affordable and easy to use
- > Images are saved in standard file formats, making them easy to integrate with an existing patient management system

**88801** Image Capture System for Desktop PC

**88802** Image Capture System for Laptop PC