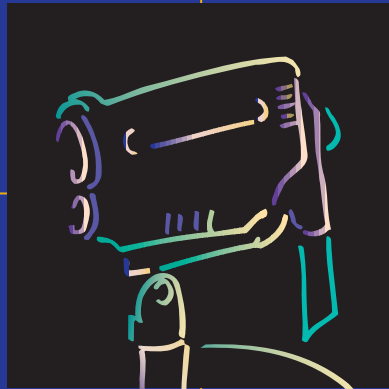


WELCH ALLYN INTRODUCES

THE FIRST



TRUE VIDEO

COLPOSCOPE

Medical Device Depot
Inc.
www.medicaldevicedepot.com
Toll Free 1-877-646-3300

WelchAllyn™

New **Welch Allyn®** technology
changes the way colposcopy is performed



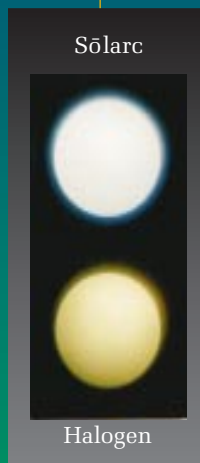
A unique CCD/optics design that redefines high-resolution imaging

- Highest-quality 1/3" CCD imager currently available utilizes 380,000 pixels for full-screen, high-resolution imaging
- Low aberration optical lens system design provides constant, clear, crisp images for accurate diagnosis and effective treatment



A new light source that changes the way you look at things

- Proprietary Welch Allyn Sōlarc lamp generates light 50% brighter and whiter than any halogen light source for truer tissue color
- Concentrated light source produces uniform, high-density beam with no loss of light, even at high magnification



The Power of true video imaging

■ Brilliant, High-Resolution Images

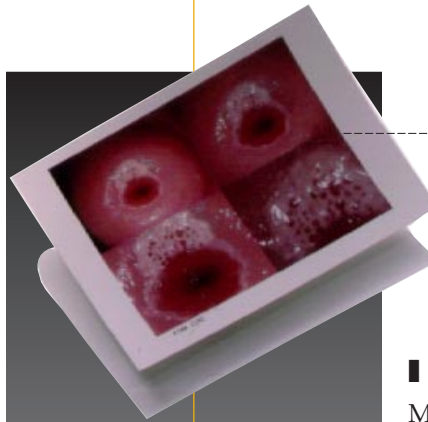
No couplers or beam splitters to degrade image quality or field of view

■ Accurate Tissue Color

Solarc illumination provides white, bright light for true color rendition with no light loss at any magnification

■ Easy to Use

Sleek, compact design with ambidextrous controls improves access to the patient



■ Remote Documentation

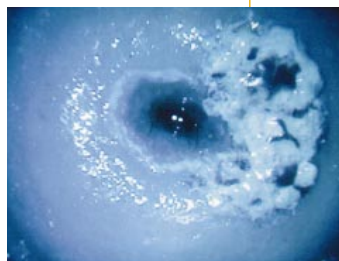
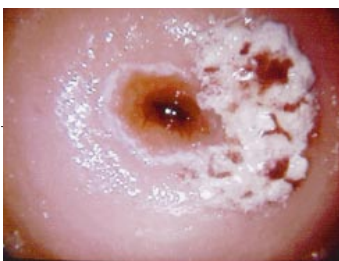
Capture, store and print images directly from the instrument

■ Continuous Zoom & Focus

Motorized, digitally controlled camera module provides step-free operation

■ Shadow-Free Illumination

Adjustable illumination beam director rotates to eliminate shadows during any procedure



■ Enhanced Vascularity

Patent-pending electronic green filter removes red from image with no loss of light

■ Enhanced Education, Compliance & Training

Simultaneous viewing of video images facilitates group participation among doctors, patients and staff

The Welch Allyn®

VIDEO COLPOSCOPE



S stand-alone efficiency

The Welch Allyn video colposcope is a fully self-contained, stand-alone unit that incorporates light, power and video into a unique, compact system. For colposcopy, this is a true breakthrough that makes all the benefits of high-resolution video imaging affordable for the physician. The result is more convenience, performance and satisfaction for you and your patient than has ever been available before.

All-in-one integration for true video colposcopy

■ Self-contained design incorporates video, illumination and power in a single, compact module that **maximizes working space**

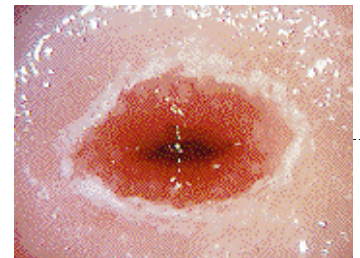
■ The ability to capture, freeze and store images directly from the handle of the instrument for **convenient operation**

■ **Choose from two stands**—vertical stand with a small footprint to maximize floor space, and swing arm stand that provides unobstructed access to the patient

■ Electronic green filter **enhances vascularity** with no light loss

■ Uniquely designed adjustable illumination beam director for **shadow-free illumination**

■ Digitally controlled step-free system provides **continuous zoom (from 4.5x–25x) and focus**



Specifications

Focal Length.....300 mm
Magnification.....4.5 x – 25 x
Field of View..... 66 mm – 14 mm
Depth of Field.....112 mm – 5 mm
Power Supply.....110/120V, 220/240V

Video Colposcope Product Numbers

88000 Welch Allyn™ Video Colposcope Vertical Stand with RS232
88002 Welch Allyn Video Colposcope Vertical Stand with RS232-UK
88004 Welch Allyn Video Colposcope Vertical Stand with RS232-Europe
88006 Welch Allyn Video Colposcope Vertical Stand with RS232-Australia

89000 Welch Allyn Video Colposcope Swing Arm Stand with RS232
89002 Welch Allyn Video Colposcope Swing Arm Stand with RS232-UK
89004 Welch Allyn Video Colposcope Swing Arm Stand with RS232-Europe
89006 Welch Allyn Video Colposcope Swing Arm Stand with RS232-Australia

WelchAllyn™

The Welch Allyn®

VIDEOPATH™

COLPOSCOPE



Multiple uses from a
single source.

We call it VideoPath because it's the path to more and more video procedures from a single platform. VideoPath gives you a foundation to build on, a way to increase the video capabilities of your practice indefinitely, one step at a time.

VIDEO  PATH™

Available outside the U.S. in 1997

A platform you can build on

VideoPath's light source and monitor provide **a platform for multiple video procedures**. As more procedures are added, overall cost is comparable to and eventually less than stand-alone instruments

VideoPath's proximal camera module allows you to **convert your optical instruments to video**, even if they're other manufacturers'.

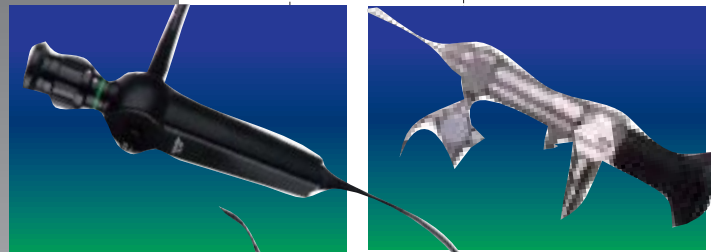
Instruments like:

- rhinolaryngoscope
- otoscope
- hysteroscope
- laparoscope



VIDEO PATH™

Modular design gives you **access to a whole family of dedicated VideoPath instruments**, including products currently available (VideoPath sigmoidoscope and VideoPath colposcope), and instruments in development that will seamlessly integrate with VideoPath



Two models to choose from—the standard VideoPath system and the “telemedicine-ready” VideoPath with the ability to capture, freeze and store images directly from the instrument

Choose from two stands—vertical and swing arm



Specifications

Focal Length.....300 mm
 Magnification.....4.5 x - 25 x
 Field of View..... 66 mm - 14 mm
 Depth of Field.....112 mm - 5 mm
 Power Supply.....110/120V, 220/240V

VideoPath Colposcope Product Numbers

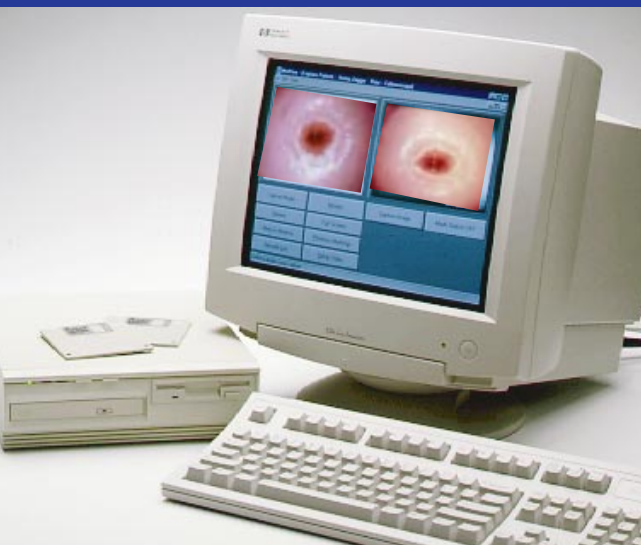
88100 VideoPath Colposcope Vertical Stand
 88110 VideoPath Colposcope Vertical Stand with RS232
 89100 VideoPath Colposcope Swing Arm
 89110 VideoPath Colposcope Swing Arm with RS232

Available outside the U.S. in 1997

WelchAllyn™

It changes the way you'll manage your future

The colposcope you're buying today opens a world of possibilities for tomorrow



- The colposcope has a built-in RS232 communications board that makes the instrument “telemedicine-ready” for the future and ensures your current system will not become obsolete
- Our image management system, currently under development, will allow for future ability to transmit and receive video images from remote locations
- The capabilities of the system you're getting today will help you to provide better education, training and patient care in the health care environment of tomorrow