

# AED Challenge®

Works like you work.™

## KEY FEATURES

- Tutorial, practice and test modes
- Troubleshooting scenarios
- Interactive guidance
- Performance reports
- Scheduled email reminders

## VERSATILE OPTIONS ENHANCE YOUR SKILLS

- Dozens of real-life scenarios
- Pediatric patients using Infant/Child Reduced Energy Defibrillation Electrodes
- Bag-valve mask
- cprMAX™ technology options
- Male or female adult patients

## FOR USE WITH:

- LIFEPAK CR® Plus AED
- LIFEPAK EXPRESS® AED
- LIFEPAK® 500 AED
- LIFEPAK 1000 Defibrillator



AED Challenge is an interactive, online AED/CPR training tool for LIFEPAK automated external defibrillators (AEDs). It enables you to refresh your AED/CPR skills when and where you choose. Real-life scenarios give you regular practice and immediate feedback to help refresh and maintain your skills.

### *Major benefits to your organization:*

#### **Clinically proven**

In an independent clinical study, AED Challenge was shown to be as effective as instructor-led refresher training.\*

#### **Prepares students for real-life emergencies**

AED Challenge uses interactive, realistic cardiac arrest scenarios. Voice, text and visual prompts help improve skill retention.

#### **Interactive and documented training**

Users receive instant feedback and detailed scoring reports to assess comprehension of content. AED Challenge documents training and user competence, for more efficient record keeping. Performance is tracked and can be transmitted to your organization's AED administrator.

#### **Flexible protocol options**

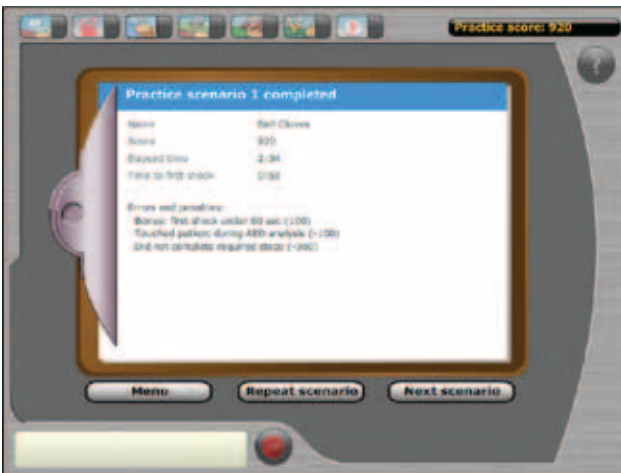
AED Challenge includes a wide selection of options that can be adjusted to meet your organization's protocols and the configuration of your AEDs. Available setup options are consistent with 2005 American Heart Association (AHA) or European Resuscitation Council (ERC) Guidelines.

#### **Management made easy**

AED Challenge has a full set of administrative features that allow you to add users, track participation, monitor performance, and select options appropriate for your group.



Realistic scenarios provide valuable practice



Training is interactive and documented

Acme Incorporated — A Shift

**Paulson, Hal**

Date/Time	Scenario	AED Type	Scenario Time	Shock Time	Score
01/11/2008	1	LPCRPlus_2005	113	57	1300
	2	LPCRPlus_2005	90	0	1235
	3	LPCRPlus_2005	172	46	1260
Average Score:					1265

Error Messages:  
 Scenario 1: +100 point bonus: first shock under 60 sec (100)  
 Scenario 2: Didn't start CPR soon enough (-50)  
 Scenario 3: Did not clear during analysis (-75); +100 point bonus: first shock under 60 sec (100)

AED Challenge keeps score and makes management easy

User Accounts

Level	Username	Name	Email	Tests	Tracked	Next Test	Last Test
<b>Acme Corporation - Engineering Department</b>							
Off	HR	rice@acme.com	Jones, Rickie	ricard@thedchallenge.com	Tests	05/12/2007	05/05/2009
Off	Sub-G	mpj@acme.com	Pat, Maria	mpj@acme.com	Tests	10/04/2006	04/22/2004
<b>Acme Corporation - Legal Dept</b>							
Off	HR	wor@acme.com	Orta, Al	wor@acme.com	Tests	05/05/2007	06/05/2009
Off	Sub-G	tp@acme.com	Felt, Lisa	tp@acme.com	Tests	11/13/2006	04/22/2004
<b>Acme Corporation - Sales and Marketing Dept</b>							
Off	Sub-G	ml@acme.com	Elephant, Rex	ml@acme.com	Tests	01/01/2008	04/22/2009

Monitor training and track participation by user or group

Subgroup Options

Subgroup AED options have been assigned

**LIFEPAK CR Plus (Guidelines 2005) - Last Updated: 07/17/2008**

Return to Subgroup Information

Protocol and Scenario Options			
Rescuer Type:	Lay (1 rescuer)	Guidelines/Protocol:	AMA American
Call EMS/Shout for Help:	Call EMS	Female Scenarios:	OFF
Initial Rescue Breaths:	ON	Child Scenarios:	OFF
Pulse Check During ABCs:	OFF	Bag-Valve Mask:	OFF
CPR Timer Speed:	60%	Loose Electrode:	ON
Continuous CPR Compressions:	OFF	Troubleshoot Percent:	20%
Adult Compression-To-Breath Ratio:	30   1   2	Child Compression-To-Breath Ratio:	30   1   2
AED Options			
Pulse Check:	Never	Clear Patient for Analysis:	ON
Pulse Prompt:	Check Pulse	Audio:	ON
Fully Automatic:	OFF	AED Text Prompts:	ON
Infant / Child Electrodes:	OFF	CPR Time 1:	120 seconds
		CPR Time 2:	120 seconds

Submit Updates | Reset | Restore Device Defaults

Customize AED Challenge to match your internal protocol