

Tuttnauer Steam Distiller

Model 9000™

*Pure Clean Water,
Made Simple...*



- Water purification by steam distillation & carbon filtration
- Effectively removes most tap water impurities
- Features automatic shut-off after 1 gallon cycle
- Includes collector/storage bottle

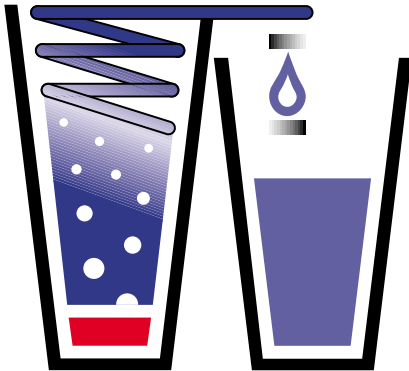
Medical Device Depot Inc.

www.medicaldevicedepot.com
1-877-646-3300

tuttnauer

Sterilization & Infection Control Products

Tuttnauer Model 9000™ Steam Distiller



Distillation Effectively Removes Contaminants such as Bacteria, Particles, Dissolved Solids and VOCs.

Optional Accessories and Supplies

- Kleenwise™ Boiler Descaler
- Post Carbon Filter Cartridges
- Extra 1 Gallon Collector/Storage Bottles

Operational maintenance and replacement requirements are essential for the products to perform as advertised.

The Tuttnauer 9000™ Distiller can save you money when compared to the high cost of bottled water purchases, the cost and inconvenience of lugging cumbersome bottles and the down time of staff needed to travel outside the office.

- Contemporary Euro-Style Design.
- Manual Fill - No Water Hookups.
- Automatic Shut-Off .
- Post Carbon Treatment System.
- Stainless Steel Condenser - Not Aluminum.
- External Heating Element for Long Life.
- Fan-Delayed Start for Improved Efficiency.
- UL Listed #28KL.
- EST #46050JPO1.
- USA Patent Pending.
- 1 Year Limited Warranty - Parts & Labor.
- 120VAC/60Hz 750W International 230VAC/50Hz 750W.
- Distillate Capacity - 1 Gallon (3.79L) in 4.5 Hours Will Provide Up to 5 Gallons (18.93L) in 24 Hours.

A Cost Comparison with Bottled Water

	Distilled Water*	Tuttnauer Distilled**	Your Saving
Cost per Gallon	\$0.89	\$0.25	\$0.64

* Based on comparison shopping.

** Based on the U.S. Department of Energy national electrical cost averages.

7000 SERIES LARGE CAPACITY DISTILLERS

Model 7000* (3.5 gal System)
 Model 7000-8* (8 gal System)
 Model 7000-12* (12gal System)

Technical Specifications	Net Weights
Width 11" (28cm)	Countertop 3.5 gal. 30lbs.(13.5kgs)
Depth 17" (43cm)	Floor Model 8 gal. 37 lbs.(16.5kgs)
Height 3.5 gal. 17" (43cm)	Floor Model 12 gal. 44lbs.(20.0kgs)
8 gal. 36" (91 cm)	
12 gal. 42" (107cm)	

*Series 7000 is directly connected to the water supply for continuous operation. Reservoir is designed for front or side mounting of spout. Photo shown with front mounting.



The Tuttnauer 9000™ Features a Removable Boiler for Easy Fill and a Unique Recessed Heating Base to Reduce Scale Buildup

Technical Specifications for Model 9000

Space Saving Dimensions:
 Width:9.5" (24.13cm)
 Height:15" (38.10cm)
 Depth:16" (40.64cm)
 Distiller Net Weight: 10lbs (4.54 kg)

Yasou YZK Kotler

LTR231-0013-A

tuttnauer

Sterilization & Infection Control Products